

16109 PATRICIA DRIVE

Presented by



Spectacular Private Ravine Views From All Floors

46' Wide Lot | 3600+ Sq Ft Living Space | 9' & 10' Ceilings | Solar Power & Electric Car Ready

Upper Floor

1690 Sq Ft

- 652sqft Master Suite w/ Ensuite, WIC & Laundry
- 4 Bedrooms Upstairs
- Spacious Bonus Room
- 5pc Jack & Jill Lav/Bath

Main Floor

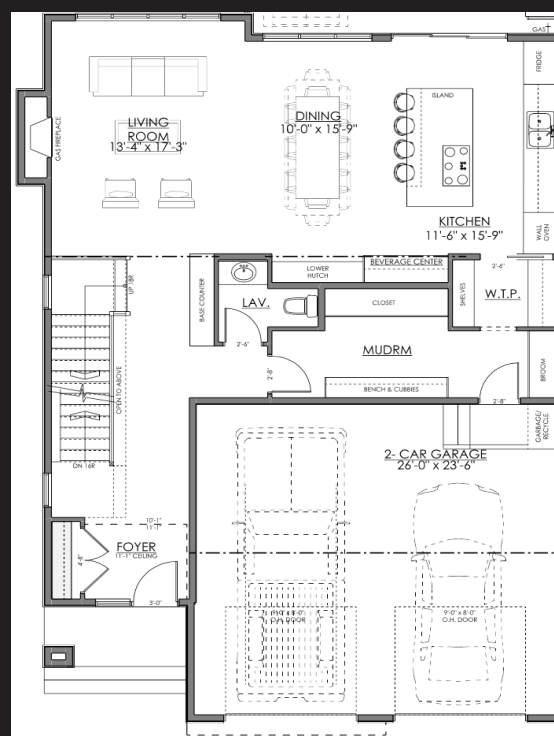
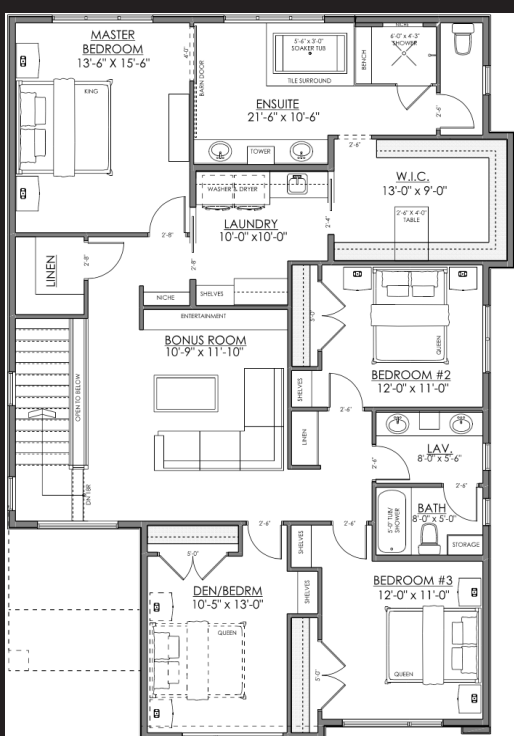
1160 Sq Ft

- 26ft Glass Curtain Wall
- Walkout Deck
- Chef's Kitchen
- Large Family Mudroom
- XL Garage - Car Lift Ready

Lower Floor

799 Sq Ft

- Open Rec/Media Room
- Terraced Window Well
- Wet Bar Kitchenette
- Nanny Suite/Office
- Large Storage Room



Available
Spring
2020

Call 780.803.8880 For More Information Or Visit MastBuilt.com